



2018  
**WORLD**  
CRUISE

Crystal Symphony • Cruise OCS180217 No. 5

Wednesday, February 21, 2018

Cruising Milford, Doubtful & Dusky Sounds, en Route to Stewart Island, New Zealand

Sunrise: 7:13am • Sunset: 8:55pm

*Sunrise/Sunset times are given in Ship's time and are approximate to the estimated position of the ship.*

## Milford Sound — New Zealand's Majestic Fjord

*Long ago, the celebrated writer Rudyard Kipling labeled Milford Sound, "the eighth wonder of the world." Perhaps you'll agree.*

As the warming sun ripples in Crystal Symphony's wake, she'll slice through the green-blue waters of this magnificent wonderland where white clouds cling to lofty, emerald mountain-tops. Sheer cliffs echo the ship's whistle, sending it back with a repetitive blast. Ribbons of water drift mistily down the mossy rock walls, bound for the fjord below. If the breezes are in the right direction, a fine spray will dance on the wind and refresh the morning air.

### Fjordland

Few can deny that much of New Zealand's most magnificent scenery lies in the southwest corner of the South Island. Captain James Cook first laid eyes on these steep cliffs and deep-water

inlets during his first voyage of discovery, aboard the HMS Endeavor in 1770. His course took him through Dusky Sound, the largest of these fjords. During his second voyage in 1773 aboard the HMS Resolution, Cook returned to the area and established a tiny settlement. Two months passed before he and his crew would again set sail.

Among the facilities installed in the area during Cook's brief stay were a brewery and a blacksmith's workshop to refit his vessel. The industrious men concocted a tea steeped from the manuka shrub, celebrated to the strains of a bagpipe, and introduced muskets

continued...



The beauty and majesty of Milford Sound

### Evening Dress Code: Crystal Casual

**Women's Crystal Casual** includes: A blouse, sweater, dressy slacks, skirt, dress

**Men's Crystal Casual** can include:

A sport coat, dress shirt, button-down shirt, open collar or collared polo shirt and dress pants or smart trousers (no tie required)

### Today's Notices

#### Cruising Milford, Doubtful and Dusky Sound

Crystal Symphony is scheduled to cruise the above Sounds as follows:

**Milford: 7:00am – 10:00am**

**Doubtful: 1:00pm – 3:00pm**

**Dusky: 4:30pm – 6:00pm**

All times approximate; please listen to updates from the Bridge.

#### Spa Closure

Please note, the Sauna and Steam Rooms in the Crystal Life Spa will be closed until further notice due to the incident that occurred recently. We apologize for any inconvenience and appreciate your understanding.

#### In Town Tonight

This evening at **7:30pm and 9:15pm** in the Galaxy Lounge, Crystal Cruises proudly presents Transformation Artists **Soul Mystique**.

#### Dixieland Jazz

Join the Gentlemen from the **Crystal Showband** in the Crystal Cove from **8:15pm to 9:00pm**, as they perform Dixieland Jazz music for your dancing and listening pleasure. With Special guest Sarah Hayes.

#### "Jump & Swing-A-Mania"

Join The Crystal Ensemble of Singers and Dancers at **10:30pm** this evening in the **Starlite Club**.



...from previous page

to the Maoris. Within a generation, cottages lined the harbor – homes to the sealers, whalers and shipbuilders who established residences in the area.

To this day, much of the Fjordland remains remote and off the beaten track. It is accessible only by seaplane, boat, foot or Crystal Symphony.

This land has remained pristine and unspoiled due to the efforts of the New Zealand government to preserve this region. Fjordland National Park covers an area in excess of three million acres, or 4,725 square miles. Parts of the Park are so heavily wooded and inaccessible that they have never been accurately charted. And hidden in these trees and forests are many untold tales.

### **Milford Sound**

As you gaze upon the deep valleys and gorges carved by the massive force of ancient glaciers, close your eyes and imagine this amazing transformation. Glaciers, on their icy crawl to the sea, ground out deep basins and carried

away everything in their path. The frozen, ice-blue walls receded over time and allowed in a rush of sea water which ultimately formed these majestic fjords.

Sit topside in a deck chair as you cruise along... a privileged witness to Mother Nature's artistry. Milford Sound is a mere mile or so wide at the widest point and ten miles long (roughly the size of Manhattan). The ocean floor is more than 1,200 feet below. Rising above you is mighty Mitre Peak which shoots almost one mile into the sky.

Off the opposite bow is Bowen Falls where the spray roars down the sheer cliffs, crashes and then settles into the sea. On the facing shoreline is Stirling Falls which cascades down in a series of falls before joining the mirror-like waters below.

### **Milford Track**

Someday you may wish to return to this magnificent area and have a closer look. Take along some good hiking boots and join a group of hikers for

a trek along the Milford Track. This 33-mile walk across swinging bridges, through meadows and rain forests, past roaring rivers and waterfalls, rugged beauty and untapped wilderness, is one of the world's most picturesque. The hike usually takes five days and nights... nights which are spent in comfortable, well-provisioned huts.

Along your route you can take in the jagged canyons and soaring mountains, as well as mossy valleys and ancient glacier beds. You can pause to pick a bouquet of mountain lilies and daisies for your favorite trekking partner. Later you can press them in your travel journal as a souvenir of your visit to New Zealand's unforgettable Fjordland.

– Karyn L. Planett

---

### **Captain Thomas Larsen and the Crystal Family wish a...**

**Happy Birthday to:**

Mr. Robert Mantell

Mrs. Ros Torrance

**Best Wishes!**

## Casino Tournaments Today

The Casino is pleased to host these exciting tournaments today:

All Tournament rounds to be played are determined by the number of entrants.

**1:00pm**

**\$25 Blackjack Tournament  
Qualifying Session**

**2:00pm**

**\$60 Texas Hold'em Tournament**

**3:00pm**

**\$25 Slot Tournament Qualifying Session**



Guests may sign up any time while the casino cage is open.

Last registration time will be 15 minutes prior to tournament start time.



## Join us for Bingo!

Today in the Starlite Club:

**3:45pm Bingo cards on sale**

**(Bingo starts at 4:00pm)**

Hosted by Resorts World at Sea Casino





## Dusky and Doubtful Sounds — Two of the World's Most Majestic Fjords

*Captain James Cook's 1770 voyage along New Zealand's rugged west coast had already yielded his discovery of the magnificent Milford Sound. It didn't stop there. As he piloted HMS Endeavour farther down the coast, the captain found several more enticing fjord channels.*

Overwhelmed by the beauty of what he had named Milford Bay, Cook wanted to “discover” more. But he was reluctant to enter the uncharted fjords; channels were perhaps too narrow or shallow, or winds were not favorable. He was also concerned about not finding an anchorage for maintenance and provisions, or that there might not be enough wind to fill Endeavour's sails for maneuvering back out into the Tasman Sea.

At the eighth inviting inlet, Cook again had doubts, so he sailed past, but jotted its newly given name in his log-book: Doubtful Harbour.

He later spotted what seemed an even more magnificent fjord with an even wider entry than the dozen or so before it. However, dark was fast approaching, so once again he passed by, just as the sun set. He called it Dusky Bay.

When Cook returned to New Zealand in 1773 on HMS Resolution, he was more intrepid than cautious. This time he sailed into most of South Island's fjords, ending at the southwestern-most tip with the largest and best-equipped

inlet for supplies and maintenance of his ship. He was back at Dusky Sound.

(For those curious about the terms: a sound is the narrow channel connecting two large bodies of water. Once through the sound, ships are in a glacier-formed fjord.)

### Two of the 14 Major Sounds

According to the hordes who have visited and tried to describe these fjords, words fail.

Dusky and Doubtful are the two largest of South Island's 14 major sounds. And, in a country noted for some of the world's most beautiful sounds/fjords, they are also the most impressive.

Oscar-winning film director Peter Jackson certainly thought so when he used the Fjordlands and surrounding areas as scenic backdrops for his *Lord of the Rings* trilogy.

Most experts list Dusky and Doubtful Sounds as the must-see fjords. In fact, local tour guides suggest seeing these two first, “so you won't be disappointed with Milford Sound.” You decide — after you've seen all three.

### Doubtful Sound: Quietest

We sail south along more of the exquisite New Zealand coastline, heading into the narrow passage that Captain Cook called Doubtful. This is the second largest fjord (after Dusky), but is perhaps even more breathtaking. After we pass the imposing island that almost blocks Doubtful's entrance, a 25+ mile waterway reflects layer after layer of impossibly beautiful islands and mountains, stretching, it seems, to infinity.

Again, have cameras ready, but don't forget to pause and enjoy the reverend, almost deafening quiet. Take it all in: fjords, islands, waterfalls, snow-caps, rugged mountains, clouds, mist, seals, rocks, seal rocks, penguins, birds and other wildlife, plus occasional kayaks, comprising most of the waterway's “traffic.” We can't promise you'll see all of the above, but whatever the weather, Doubtful never fails to impress. It couldn't, at ten times the size of Milford.

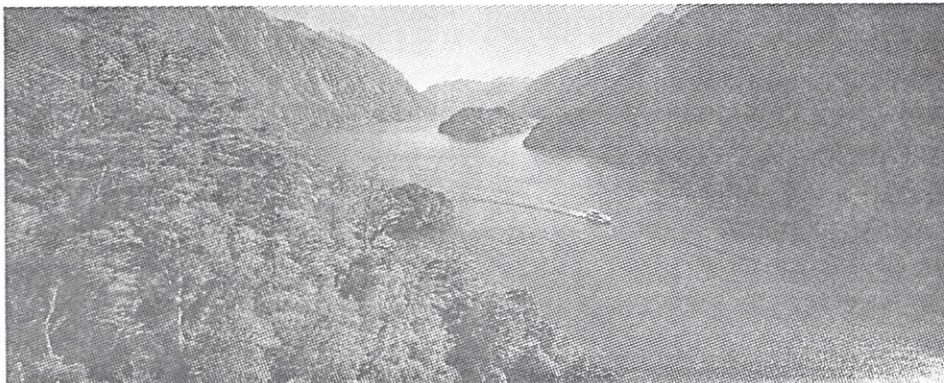
### Dusky Sound: Southernmost

Lucky for us, the open sea offers sole access to most of these Fjordland wonders. Some are also accessible on foot, but paths are challenging, and few even have roads connecting them inland.

With its backdrop of majestic mountains, this is the country's longest fjord, stretching nearly 30 miles inland and spreading to five miles at its widest. The waterway meanders through wooded islands along mirror-like inlets; the spectacular land views are doubled in the water's glassy surface.

Have cameras ready, ideally, at various different vantage points on board. Note the fjord's steep cliffs at the farthest reaches. Enjoy the waterfalls that, depending on recent rainfall or snowmelt, crash or mist into the lakes. Marvel at the large islands called Anchor, Cooper, and Long, hopefully spotting some of

continued...



Doubtful Sound



...from previous page  
their abundant wildlife along the way.

You won't be disappointed with any of the sensational sights in these sounds. Even little Milford was dubbed the "Eighth Wonder of the World" by Rudyard Kipling. He certainly could have called Dusky and Doubtful the ninth and tenth.

– Kirk Frederick

## Crystal Adventures Shore Excursions

All tours meet today according to the times listed below. For the comfort of all our guests, Crystal Cruises endorses a "no-tour announcement policy."



### Morning Departure

**MIL-LD-LS • Overland Adventure:  
Spectacular Queenstown from  
Milford Sound to Dunedin**  
Departs **Crystal Cove** at 7:45am

## Crystal Life Spa & Salon

### Spa-Topia

This 75-minute Spa package is too good to pass up.  
Includes ALL of the following:

- Full Body relaxing Hot Stone or Bamboo Massage
  - Foot and Ankle Massage
  - Scalp Massage
  - Refreshing Spa Facial

**Only \$149 for a limited time.**

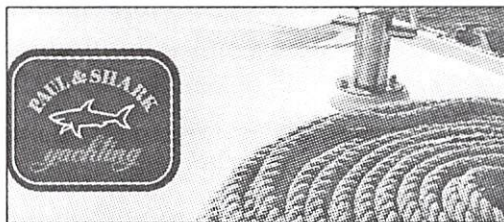
Valued at \$291 - save \$142



*Appointments are limited so call ext. 3875 or  
visit the Spa to reserve your treatment.*

AVENUE OF THE STARS BOUTIQUES, TIFFANY DECK 6 MIDSHIP

## PAUL & SHARK

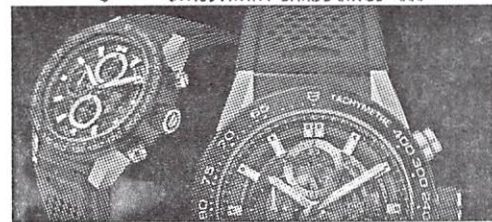


Originally inspired by sportswear and a passion for the sea, Paul & Shark has been creating quality clothing for 40 years. Paul & Shark is synonymous with Italian elegance and style. Enjoy an exclusive 25% off savings on the entire collection.

Available inside of the Apropos boutique.

## TAG Heuer

SWISS AVANT-GARDE SINCE 1860



Discover the TAG Heuer collection onboard and enjoy exclusive savings of 15% off for a limited time only. Whether you glide from the boardroom to tennis court, the TAG Heuer Collection of time pieces mixes elegance and precision to create the ultimate sports watch, perfect for any occasion.

Facets.



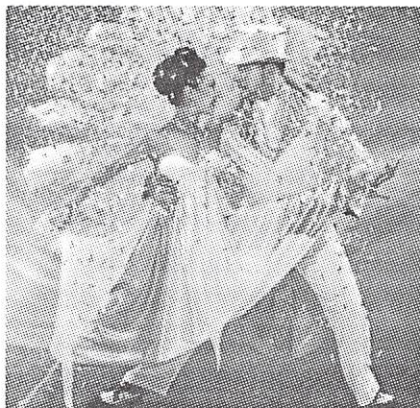


## TONIGHT'S ENTERTAINERS

---

### Transformation Artists Soul Mystique™

Breathtaking is the word of renowned International Dance Quick Change Artistes Gavin Skinner & Lydia Lim. A partnership since 1996, this celebrated Australian duo, also known as Soul Mystique™ is the only act in the world performing the two art forms of Professional Dance-Sport with Magical Costume Transformations.



Their stunning performances have captivated and flabbergasted audiences all over the globe, in over 60 countries, from television, live theatre, to high profile corporate events. They have graced the stages of famous theatres such as The London Palladium to Las Vegas, performing next to the likes of John Cleese, Katy Perry, Siegfried & Roy, Human Nature, Jimmy Barnes, Bananarama, The Pretenders, and Maroon 5.

Soul Mystique is also one of the highest sought after acts in Australia and Asia for variety television. This act is most renowned on Australian TV for pushing boundaries & performing world record quick change concepts which brought them fame on the reality TV show 'Australia's Got Talent' (Seasons 1 & 6). Both times, the act was loved and voted through to the Grand Finals by the nation, placing 3rd in Season 6. . They were the only visual act to make the top 3 in the Grand Finals, making international headlines as the most innovative and outstanding quick change act in the world.

Their attention to detail from costuming, prop design, to choreography, has been noticed by other artists worldwide, and they have been approached to co-produce the visual entertainment for artists such as Asia's AList celebrity Andy Lau, Cirque Du Soleil, and Producers of Fashion Week New York, London, & Paris.

In world variety theatre, Soul Mystique™ has graced the stages of the most prestigious venues from Las Vegas to London's West End. They were the closing act in 2008 'Variety Live' in Las Vegas sharing standing ovations with the world's best in variety theatre. This performance led to an honourable invitation by Siegfried and Roy Tribute show producers to be featured in yet another world variety extravaganza at the London Palladium in September 2008.

Soul Mystique's accolade of media appearances have also included CNN's 'Business Traveller', CNBC's

Bombay Advertising Logies, A Tribute to Siegfried & Roy (Foxtel), Seasons 1 & 6 Australia's Got Talent (Channel 7), NRA Fashion Design Awards (9 Network), The Shak (Channel 7), just to name a few.

In 2012, Soul Mystique was invited to Japan by Nippon TV to produce a dance transformation segment for famous Japanese Comedian 'Ayoto Imoto' on Japan's highest rating family show – ITTEQ. This was an instant hit amongst its 16.5 million viewers. In 2013, Germany's most popular TV show, 'The 25' head-hunted Soul Mystique to appear in their TV special on some of the world's most Extraordinary Passions. This was aired nationwide across Germany.

In 2013, this duo introduced 'Soul Mystique Boutique' - an exclusive collection of quick change fashion pieces for the general public. This label was launched in New York, and since then, has been worn by the general public, corporate clients, to celebrities world wide.

Soul Mystique's contribution to variety entertainment has not only made an impact on Australian and Asian TV, they are recognized for being the best example of live entertainment in Australia's brimming event's industry, and were titled 'Australian Entertainer of the Year' Finalists by the prestigious Australian Event Awards in 2011, 2012, 2014. On the world stage, Soul Mystique™ has been listed in 'The World's Top 10 Best Magic Acts' by Fox Bio Channel.

Quoted as 'Absolutely Fabulous!' – Soul Mystique™ never fails to mystify, amaze, and entertain their audiences wherever they go!

**Soul Mystique perform at 7:30pm and 9:15pm in the Galaxy Lounge.**



---

## FUTURE CRUISE SALES

---

### Onboard Booking Savings

We sincerely hope you are enjoying your time on board beautiful Crystal Symphony, and encourage you to start the booking process for a future cruise during the time you are sailing with us on board, to secure your **Onboard Bookings Savings** (the amount for which is equal to your Crystal Society Savings). All newly-initiated bookings are forwarded, via our Los Angeles Office, to your respective travel professional who receives full credit for your booking and who will provide the breakdown of cruise fare details and collect a further deposit upon your return home, generally within 20 days.

Very kindly, we remind our guests that booking on board remains a popular activity, especially for our Crystal Society guests, and, as we wish to offer this opportunity to all of our guests during their time on board, please keep in mind that you don't have to wait in line to begin a future cruise booking – simply take a moment to complete a Cruise Booking Request form (with requested cruise and category) available at the Future Sales desk, which may be turned in to Reception or the Future Sales desk up until **8:00pm on Friday, March 2, for guests disembarking in Auckland**. Your shipboard account will be charged the respective deposit amount, and all further details will be handled by your travel professional upon your return home. Please kindly be reminded that existing bookings (bookings made prior to arriving on board) *cannot* be changed while on board; only your respective travel agent can change an existing cruise booking. We have many wonderful sailings to worldwide destinations, and look forward to sailing with you again soon! Book early for best available faring and room location, as well as to secure your **Onboard Booking Savings**. We sincerely thank you for choosing Crystal Cruises.



---

## HUBERT GEMS

---

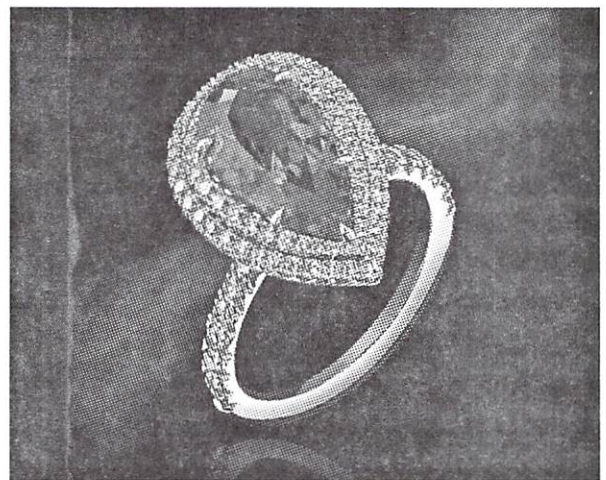


### EMERALDS

The wonderful green color of an **emerald** is unparalleled in the gem world

Join renowned custom jewellery designer **Hubert Gesser** for an informative talk to learn more about our rare collection of Colombian, Brazilian and African Emeralds

**Today, Wednesday 21<sup>st</sup> February  
3:30pm Facets**



All of Hubert's designs are  
Tax and duty free and  
Exempt from US customs charges  
Ask in-store for details



# Daytime Activities

## Good Morning

7:30am★ Live 8:00am	<b>Morning Walk on Water &amp; Nordic Walking Program</b> with the Fitness Director. <b>"Symphony Today" Breakfast Show</b> with your hosts Cruise Director Shane Morley and World Cruise Hostess Sarah Hayes. <i>Rebroadcast available on Demand. (Homepage - Digital Entertainment - Crystal Channel)</i>	Promenade Deck Aft  Live TV Channel 2	7
8:00am onwards	<b>Commentary</b> on the Open Decks & Live TV Channel 1 is provided by <b>Park Ranger Ross Kerr</b> during our transit of Milford, Doubtful and Dusky Sounds.	PA System & TV Ch. 1	
8:15am	<b>Fitness Class: Wake up Stretch</b> with the Fitness Director.	Starlite Club	6
8:30am – 12 Noon & 1:30pm – 6:00pm	<b>The Library Is Open.</b> Check out books for your enjoyment during the cruise. Sign up for indoor games like chess, Scrabble, Mah Jongg, etc.	Library	6
8:30am	<b>Catholic Mass</b> is celebrated by Fr. Klemmer.	Hollywood Theatre	6
9:00am★	<b>Mat Pilates Class</b> with instructor Nika Eshetu.	Starlite Club	6
9:00am	<b>Fitness Class: Tour de Cycle</b> with the Fitness Director.	Fitness Center	12
10:00am	<b>Fitness Seminar: Eliminate Back, Hip, Foot Pain with Good Feet.</b> The proper pressure distribution means the balance of the body and a natural skeletal system. To find out more about your skeletal system and how to relieve the pain, join the seminar and learn more about your foundation.	Palm Court	11
10:00am	<b>Acupuncture: The Point of Well Being.</b> Don't miss this introduction to the benefits of Acupuncture. Learn the history of Chinese philosophy and obtain insight into how this ancient health care system works.	Avenue Saloon	6
10:00am★	<b>Beginners Bridge Lesson</b> with instructors Johanna and Mike Strong. At this time, the Bridge Lounge is reserved for lessons only. Thank you.	Bridge Lounge	6
10:00am	<b>Fjordland National Park Presentation.</b> Join <b>Park Ranger Ross Kerr</b> for his presentation " <b>New Zealand's Fjordland National Park, World Heritage.</b> " Followed by a Question & Answer session. <i>(Broadcast Live on Live TV Channel 2)</i>	Galaxy Lounge	6
10:15am★	<b>TaylorMade® Golf Clinic:</b> With Golf teaching professional <b>Joe Herbert.</b> <b>The Short Game - Putting.</b> <i>(Inclement weather: Deck 12 landing.)</i>	Golf Nets	12
11:00am	<b>Complimentary Medi-Spa Seminar: Get Rid of Saggy Skin</b> with MediSpa Physician Anna Preciado M.D.	Palm Court	11
11:00am★	<b>Intermediate Bridge Lesson</b> with instructors Johanna and Mike Strong. At this time, the Bridge Lounge is reserved for lessons only. Thank you.	Bridge Lounge	6
11:00am	<b>Crystal Visions Enrichment Program.</b> Special Interest Lecturer <b>Peter Donovan</b> presents " <b>Maori and European accommodation since 1908.</b> " Historian Peter Donovan concludes the general history of New Zealand from the time it was granted dominion status until the present. The key feature of this period is the increasing accommodation of the Maori and Maori culture in New Zealand's history, essentially because of a — belated — recognition of the significance of the Treaty of Waitangi and obligations enshrined in it. <i>(Broadcast Live on Live TV Channel 2)</i>	Galaxy Lounge	6
11:00am★	<b>Paddle Tennis Open-Play</b> with the Fitness Director. <i>(Weather permitting).</i>	Wimbledon Court	12
11:30am – 12:30pm	<b>Scott Mitchel</b> plays the Crystal Piano for your listening pleasure.	Crystal Cove	5

## Good Afternoon

12 Noon **Captain's Update.** The latest weather and navigation information. PA System

★ Indicates Creative Learning Institute Activity

*continued...*



## Good Afternoon continued...

12:05pm	<b>Veterans' Get-Together.</b> Hosted by <b>General Nick Halley.</b>	Palm Court	11
12:05pm	<b>World Cruise Team Trivia</b> hosted by World Cruise Hostess Sarah Hayes. Today's prizes are vouchers for the Photo Shop, Crystal Spa & Salon or the Avenue of the Stars Boutiques.	Starlite Club	6
1:00pm – 2:00pm	<b>Poolside Music</b> with the <b>Crystal Quartet.</b> <i>Weather permitting.</i>	Seahorse Pool	11
1:00pm	<b>Resorts World At Sea Casino: \$25 Blackjack Tournament - Qualifying Session.</b> Register any time while the casino cage is open until 12:45pm.	Casino	6
2:00pm	<b>Resorts World At Sea Casino: \$60 Texas Hold 'em Tournament .</b> Register any time while the casino cage is open until 1:45pm.	Casino	6
2:00pm	<b>Mah Jongg Get-together</b> Unhosted. Sign up in the Library and meet fellow guests in...	Umi Uma	6
2:00pm	<b>Fitness Seminar: Secrets to a Flatter Stomach.</b> Learn how to combine the right type of exercise and nutrition together with detoxification to burn fat faster. Join our Fitness Directors for this one time seminar and receive some life-changing advice.	Palm Court	11
2:15pm	<b>Duplicate and Social Bridge</b> with instructors Johanna and Mike Strong. At this time, the Bridge Lounge is reserved for bridge games only. Thank you.	Bridge Lounge	6
2:15pm	<b>Needlepoint &amp; Knitting Get-Together.</b> With your World Cruise Hostess Sarah Hayes.	Palm Court, Stbd	11
2:30pm	<b>Movie: My Big Fat Greek Wedding 2 (2016)</b> Stars: <i>Nia Vardalos, John Corbett, Michael Constantine.</i> A Portokalos family secret brings the beloved characters back together for an even bigger and Greeker wedding. Rated PG-13; 1:34.	Hollywood Theatre	6
2:30pm	<b>Complimentary Dance Class: Jive.</b> With Dance Instructors Balazs, Richard & Luca and the Ambassador Hosts. <i>(No partner required).</i>	Starlite Club	6
2:30pm	<b>Complimentary Medi-Spa Seminar: Lipline Remedies</b> with MediSpa Physician Anna Preciado M.D.	Palm Court	11
3:00pm	<b>Acupuncture Seminar: Arthritis and Back Pain Solutions.</b> A helpful summary of the different causes of back pain. Conventional & alternative solutions, such as acupuncture, are presented.	Marketplace	11
3:00pm	<b>Resorts World At Sea Casino: \$25 Slot Tournament - Qualifying Session.</b> Register any time while the casino cage is open until 2:45pm.	Casino	6
3:00pm*	<b>Table Tennis Open-Play</b> with the Fitness Director.	Horizon Deck Aft	8
3:15pm*	<b>TaylorMade® Golf Clinic:</b> With Golf teaching professional <b>Joe Herbert.</b> <b>Greenside and Fairway Bunker Play.</b> <i>(Inclement weather: Deck 12 landing.)</i>	Golf Nets	12
3:30pm – 4:30pm	<b>Crystal Afternoon Tea Time</b> with music by <b>Scott Mitchel</b> on piano.	Palm Court	11
3:30pm	<b>Hubert Gems Chat: Emeralds.</b> Join Custom Jewelry Designer <b>Hubert Gesser</b> for an informative talk to learn more about our rare collection of Colombian, Brazilian and African Emeralds	Facets	6
3:30pm*	<b>Mat Pilates Class</b> with instructor Nika Eshetu.	Horizon Deck Aft	8
3:30pm*	<b>Odyssey Art at Sea Class "The Magic of Watercolor": The Sound of Music.</b> Music abounds on the Crystal Symphony, from dance bands, Broadway shows and bistro entertainment. Let's go "wild and crazy" and create a montage painting of musical themes, or a subject of your own choosing, utilizing a variety of watercolor, collage and clayboard techniques. With Instructor Gary Weeter.	Marketplace	11
3:45pm	<b>BINGO hosted by the Casino.</b> Please note that the daytime dress code is appropriate attire for Bingo; no robes. (Game starts at 4:00pm).	Starlite Club	6
4:00pm*	<b>Fitness Class: Core Conditioning</b> with the Fitness Director.	Fitness Center	12
4:30pm*	<b>Afternoon Walk on Water &amp; Nordic Walking Program</b> with the Fitness Instructor.	Promenade Deck Aft	7
4:30pm	<b>Friends of Bill W.</b> meet in...	Marketplace	11
5:00pm	<b>Fitness Consultation: Complimentary Footprint &amp; Posture Analysis</b> with the Fitness Director.	Fitness Center	12
5:00pm	<b>Good Evening Crystal.</b> Comedy clips hosted by Cruise Director Shane Morley. <i>Rebroadcast available on Demand.</i>	Live TV Channel 2	

\* Indicates Creative Learning Institute Activity





## PERSONALITY PROFILES

### Crystal Cove Pianist Scott Mitchel

From the age of five when he discovered a piano for the first time and the fact that he



could without assistance "make it go", Scott Mitchel's life has been thoroughly and consistently charted to that idea.

Enrolled in the Conservatory of Music at the age of seven in his hometown of Cincinnati — in the company of such future international luminaries as soprano Kathleen Battle — the talents which serve him to this day began to be cultivated.

He studied not only piano performance of the classics but also the very separate art of accompanying, which in fact earned him tuition for graduate study. His teacher, concert pianist Jerome Rose, has made multiple appearances on the Crystal stage.

In his tenth year as a member of Crystal's entertainment staff, Crystal Society members may recall Scott's years as band master/musical director. More recently he has moved to another room, the Crystal Cove, where he enjoys carefree independence. Music fills his heart, and his brain is exercised regularly by tournament bridge, at which he strives to excel. In what spare time there may be, he knits sweaters from his own designs.

Says Scott, "I might possibly forget your name, but I am unlikely to forget your song."

**Scott plays nightly in the Crystal Cove, Crystal Deck 5 Midship.**

### Crystal Cove Violinist Tanya Tingarova

Tanya Tingarova started her violin studies at the age of six in her home country, Bulgaria. When she was 13, she won a full scholarship to one of the most prestigious private Arts



Academies in the world. That sent her straight to California, which was a dream come true. Her life shifted from playing the violin in a small town in Bulgaria to performing in Hollywood and on some of the biggest stages around California. When she moved to New York to further her studies as a classical violinist, she discovered a different approach by playing the electric violin.

Tanya started experimenting with many different musical genres such as hip hop, electronic, pop, rock, jazz and dubstep. The opportunities for her became very versatile. She found herself

simultaneously playing classical music in beautiful cathedrals and concert halls around the city and rocking the clubs of New York on her electric violin at night. However, Tanya still wanted to explore other parts of the world as an artist so in 2012, she received an offer from an agency to move to the Middle East. She spent the next two years performing in Oman, Abu Dhabi and Dubai, which was a very exciting and different experience for her.

Currently, she is based in Dubai as a freelancer and a violin teacher. She is working on releasing her first album, which is an Arabic fusion collaboration with her agent who is a prominent movie music composer. Taking occasional breaks from the desert, she enjoys entertaining on luxury cruise ships such as Crystal.

**Tanya serenades nightly. See the Evening Entertainment page of *Reflections* for her playing times.**

### Avenue Saloon Pianist - Richard Ceasar

Richard Ceasar is a top South African entertainer, playing piano and guitar as well as being a marvellous vocalist.



He performs as a solo artiste, duo, trio and with his 5-piece band (currently performing at the Pigalle Restaurant/Nightclub in Cape Town).

From 2013 to 2017 he has toured Australia and New Zealand each year doing concerts for two months.

He plays absolutely all styles of music on piano and guitar. Richard's repertoire covers Jazz standards, Blues, Latin, Rock, Pop

and all the well-known popular International songs.

In April 2007, he released a music album, released worldwide.

He has been a professional musician for the past 30 years, and has travelled extensively, playing and touring abroad in Hotels, Casinos, Clubs and Private & Corporate Functions.

**Richard performs every evening in the Avenue Saloon, Tiffany Deck 6 Aft.**



## PERSONALITY PROFILE

---

### Crystal Showband Vocalist Nadine Sisam

Nadine Sisam, is a vocalist/performer from Cape Town. She was bitten by the theatre bug about 11 years ago. With her eclectic ear and classically trained background she is capable



of adapting her vocals to suit any genre. Her versatility coupled with the fact that her small frame belies her big voice, makes her a force to be reckoned with in the industry. Nadine loves to entertain not only with her strong vocals but also with her dance training and experience, which always produces a performance like none other. Nadine has "The Sky is the Limit" attitude and is driven by her passion for singing and entertaining people everywhere. Nadine was recently in The 1st Season of The Voice South Africa, where she wowed people across SA with her powerful and 'crispy clear' Voice.

Join Nadine at 10:30pm in the Starlite Club with the Crystal Showband, performing "Jump & Swing-A-Mania"

### Satellite & Internet Interruption

Due to our location, there is a possibility we may be unable to receive satellite cable programming, and Internet reception in our Computer University@Sea may also be unavailable. We apologize for any inconvenience.

### Additional Food Service Today

For your convenience, we offer an eye opener continental breakfast from **7:00am to 10:00am** and soup and sandwich buffet from **12 Noon to 1:30pm** in the Palm Court.

---

## CRYSTAL IMAGES

### Casual Portraits

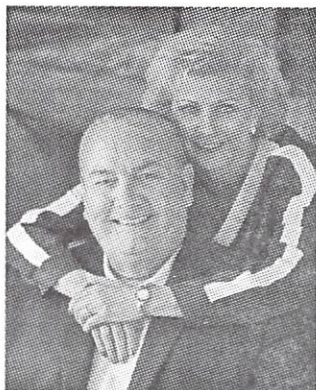
Tonight,  
February 21.

5:30pm to 8:30pm

No Appointment Necessary,

No Obligation

Crystal Plaza Deck 5



### Ocean View Portraits Today

Your onboard professional photographers are taking Ocean View Portraits outside on **Seabreeze Deck 9, Aft**, overlooking the ocean.

**Today, February 21, 6:30pm to Sunset.**

*Weather permitting.*

For more information, contact the Photo Shop on extension 3869.







# Evening Entertainment Choices

Dress Code throughout the ship for the entire evening after 6:00pm:  
**CRYSTAL CASUAL**

7:30pm & 9:15pm • Galaxy Lounge, Tiffany Deck 6, Forward



## IN TOWN TONIGHT

Crystal Cruises proudly presents...

Transformation Artists



8:15pm – 9:00pm • Crystal Cove, Crystal Deck 5, Midship

## Dixieland Jazz with the Gentlemen from the Crystal Showband

With Special guest **Sarah Hayes**. Don't miss all the fun with these talented musicians!



10:30pm • Starlite Club, Tiffany Deck 6, Midship

## "Jump & Swing-A-Mania"

Starring the **Crystal Ensemble of Singers & Dancers**

featuring **The Crystal Showband** under the direction of **Matt Scholz**.

Immediately following the performance, Dance to Swing & Pop Classics with the **Crystal Showband** and vocalist **Nadine Sisam**.



### Crystal Cove

Crystal Deck 5, Midship



**Scott Mitchel** plays the Crystal piano:

5:15pm – 6:15pm

**Tanya Tingarova** plays the violin:

6:30pm – 7:15pm

Join the **Double Malt Duo** for variety listening:

9:45pm – 10:30pm & 10:45pm – 11:30pm



### Casino

Tiffany Deck 6, Forward

**Slots:** Open from 9:00am until 7:00am February 22.

**Tables:** Open from 11:00am to Close.

### Hollywood Theatre

Tiffany Deck 6, Forward

8:30pm and 10:30pm

**Movie: Equity (2016)**

Stars: *Anna Gunn, James Purefoy, Sarah Megan Thomas.*

Senior investment banker Naomi Bishop is threatened by a financial scandal and must untangle a web of corruption. Rated R; 1:40.



### Palm Court

Lido Deck 11, Forward



The **Crystal Quartet** play for your dancing and listening pleasure.

Join the Ambassador Hosts. Enjoy Traditional Ballroom Dancing:

5:15pm – 6:00pm, 7:30pm – 8:15pm,

9:45pm – 10:30pm & 11:00pm – 12 Midnight

**Friends of Dorothy Get-Together: 6:30pm**

### Avenue Saloon

Tiffany Deck 6, Aft



AVENUE SALOON

**Richard Ceasar** plays cocktail music

7:45pm – 8:30pm

**Richard Ceasar** sings & entertains in our

Late Night Piano Bar:

9:30pm – 1:00am





## Wednesday's Dining Hours

### Breakfast

**Marketplace**, Lido Deck 11 Aft

Early-Bird Coffee (Port Side)

Early-Risers Buffet (Continental)

Breakfast Buffet

**Palm Court**, Lido Deck 11 Forward

Eye-Opener Breakfast

**Trident Grill**, Lido Deck 11, Midship

Late-Risers Breakfast

**Waterside**, Crystal Deck 5 Midship

Breakfast (Open Seating)

**The Bistro**, Tiffany Deck 6 Midship

Go-to Coffee Bar with Freshly Baked Pastries

Late-Risers Coffee with Danish Pastries

### Luncheon

**Palm Court**, Lido Deck 11 Forward

Soup and Sandwich Buffet

**Waterside**, Crystal Deck 5 Midship (Open Seating)

**Marketplace**, Lido Deck 11 Aft.

Luncheon Buffet with Mediterranean Specialties

**Silk**, Lido Deck 11, Midship

**Trident Grill**, Lido Deck 11 Midship

Open for hamburgers, cheeseburgers, wraps and snacks

**Scoops, Ice Cream Bar**, Lido Deck 11 Midship

**The Bistro**, Tiffany Deck 6 Midship

Bistro Snacks, Tarts and Pastries

**Palm Court**, Lido Deck 11 Forward

**Crystal Afternoon Tea Time**

### Dinner

**Waterside**, Crystal Deck 5 Midship (Open Seating)

**Prego**, Tiffany Deck 6 Aft (Italian Cuisine)

**Umi Uma**, Tiffany Deck 6 Aft (Japanese Cuisine)

**The Sushi Bar**, Tiffany Deck 6 Aft (Japanese Cuisine)

**Churrascaria**, Lido Deck 11, Aft (Brazilian Steakhouse)

**Silk**, Lido Deck 11, Midship (Chinese Cuisine)

**The Bistro**, Tiffany Deck 6 Midship

Petit Desserts and Cheeses

### Late Night Gourmet Snacks

Avenue Saloon, Crystal Cove and Palm Court

11:00pm – 12 Midnight

**Reservations for Umi Uma & Prego:** Reservations for each specialty restaurant may be made in advance by dialing 3854 or 0 at any time. If you'd prefer to make reservations in person, Maitre d' **Bruno Marques** is available in Prego, Tiffany Deck 6 Aft, today from 6:00pm to 6:30pm. No reservations are required for **The Sushi Bar**, first-come, first-served basis (**charges may apply**).

**Four** visits for each guest sailing from Sydney to Auckland may be made during this cruise to either **Prego**, **Umi Uma** or **The Sushi Bar** or a combination thereof without charge. Should further visits be made to any of these specialty venues, a \$30 fee per person / per visit will be charged to your onboard account. **Please**

**Note: Churrascaria and Silk Restaurants do not count towards this limit and no charges will be applied if you dine at either of these two venues.**

## Wednesday's Bar Hours

Avenue Saloon

5:00pm – Late

Connoisseur Club

5:00pm – Late

Crystal Cove

10:00am – 11:30pm

Palm Court

10:00am – 12 Midnight

Starlite Club

5:00pm – Late

Silk Bar

10:00am – 9:00pm



### Today's Cocktail Suggestion

#### Aperol Spritz

*Aperol is an Italian aperitif originally produced by the Barbieri company, based in Padua, now produced by the Campari company. Its ingredients are, among others, bitter orange, gentian, rhubarb, and cinchona.*

Aperol Bitter, Prosecco and splash of Soda

### Crystal Casual Night

5:30am – 6:30am

6:30am – 7:00am

7:00am – 10:00am

7:00am – 10:00am

10:00am – 11:00am

8:00am – 9:30am

6:30am – 9:00am

9:00am – 11:00am

12 Noon – 1:30pm

12 Noon – 1:30pm

12 Noon – 1:30pm

1:00pm – 3:00pm

11:30am – 6:00pm

11:30am – 6:00pm

11:00am – 8:00pm

3:30pm – 4:30pm

6:00pm – 9:30pm

6:00pm – 9:30pm

6:00pm – 9:30pm

6:00pm – 9:30pm

6:30pm – 9:00pm

6:30pm – 9:00pm

8:00pm – 11:00pm

### Avenue of the Stars Boutiques,

Tiffany Deck 6 Midship

**Apropos, Crystal Collection and Facets**

Open today 9:30am to 11:30pm.

**Computer University@Sea**, Tiffany Deck 6

Open 24 hours. Technology Concierges

available from 7:00am to 11:00pm.

**Concierge Desk**, Crystal Deck 5 Midship

Open daily 7:30am to 7:30pm.

**Crystal Images**, Tiffany Deck 6.

Open today 9:30am to 1:00pm and

4:30pm to 9:00pm.

**Crystal Life Spa & Beauty Salon**,

Sun Deck 12 Aft

Open 8:00am to 10:00pm including the

men's and ladies' Sauna and Steam Room;

phone 3875. Please note that appointments

are available at your request until 10:00pm.

**Crystal Life Spa Fitness Center, Aerobics**

**Studio & Weight Room**, Sun Deck 12 Aft

Open 24 hours. Our Fitness Directors are

available for personal training sessions and

are on duty from 7:00am to 7:00pm.

**Crystal Society Hostess**, Crystal Deck 5

Raffaella Sciuto is at her desk from

9:00am to 12 Noon and 3:30pm to 5:30pm.

**Future Sales Consultant**, Crystal Deck

Nikki Andrew is at her desk today from

9:00am to 12 Noon and 3:30pm to 5:30pm.

Start a new cruise for Ocean, River or Esprit

Yacht while on board and enjoy extra savings!

**Library**, Tiffany Deck 6 Midship

Open today 8:30am to 12 Noon, 1:30pm to

6:00pm and 7:30pm to 11:00pm.

Check out books for your enjoyment during

the cruise.

**Medical Center**, Crystal Deck 5 Forward

Located just forward of Reception Desk on

the starboard side. Open 8:00am to

12 Noon and 2:00pm to 6:00pm.

**Doctor's Consultation Hours:** 9:00am to

10:00am; 5:00pm to 6:00pm.

**Medical attention** (24 hours) Dial 9911.

In an extreme emergency call **3333**.

**Resorts World at Sea Casino**,

Tiffany Deck 6 Forward

**Slots:** Open from 9:00am until 7:00am

February 22.

**Tables:** Open from 11:00am to Close.

*Please note, the Casino has now received approval*

*from Customs to open today February 21 &*

*tomorrow, February 22.*

**Shore Excursions Desk**, Crystal Deck 5

Open today from 9:00am to 7:00pm.

